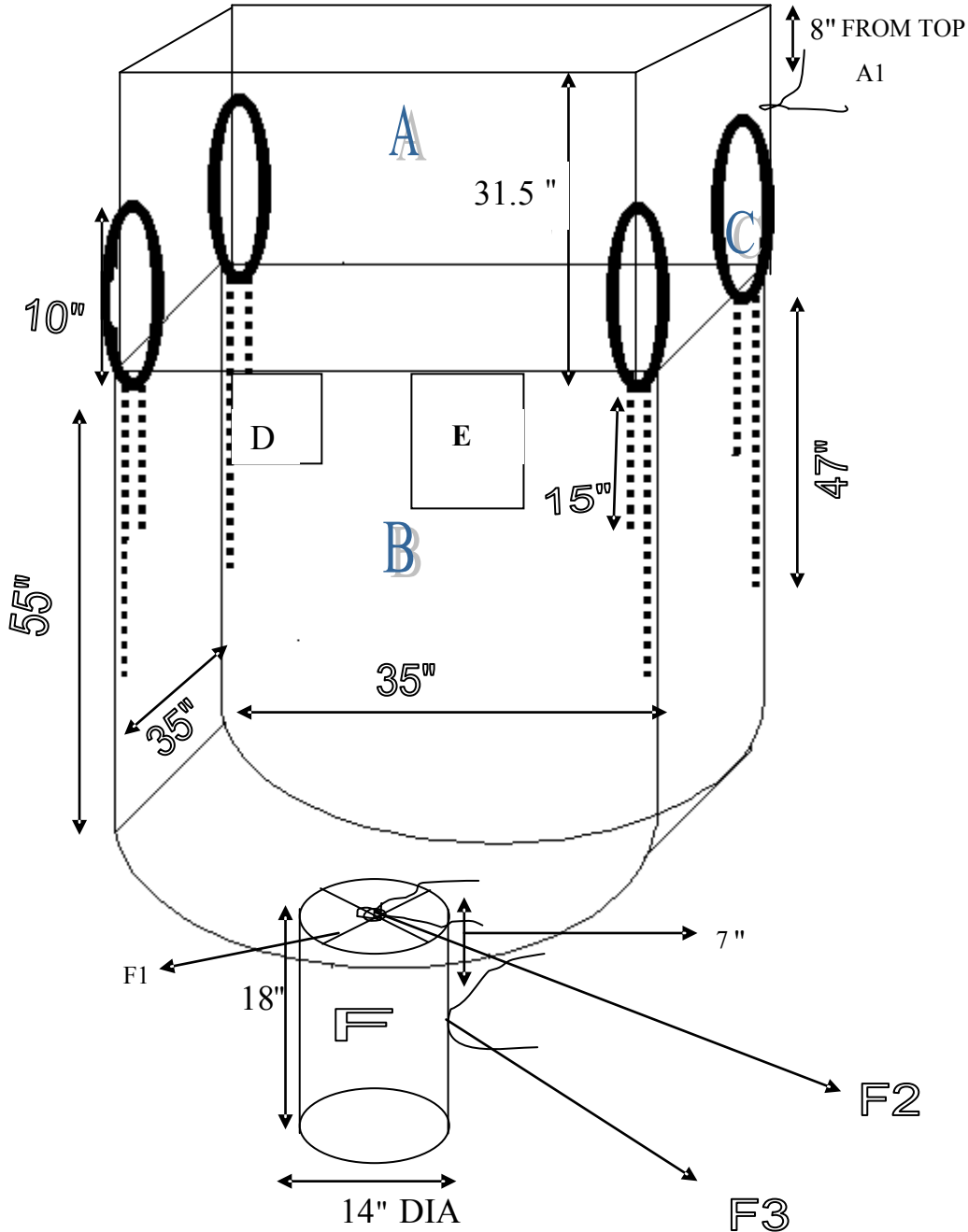


SIFT PROOF SEAMS



- A) DUFFEL TOP
- A1) DUFFEL TOP WITH TIE TAPE.
- B) BODY-U SHAPE
- C) LIFTING LOOP
- D) BULK BAG DEPOT LABEL
- E) DOCUMENT POCKET
- F) BOTTOM SPOUT
- F1) BOTTOM STAR CLOSURE
- F2) BOTTOM SPOUT STAR CLOSURE TIE TAPE
- F3) BOTTOM SPOUT TIE TAPE.

AKZ353555CDS-SPS 35"X35"X55"
 (U-PANEL) 6 OZ. + 1 OZ. COATING
 UV TREATED FABRIC
 DUFFLE TOP WITH 1/2" WEB TIE
 14"DX18"L DISCHARGE SPOUT
 WITH STAR PETAL CLOSURE 1/2" WEB TIE
 4 @ 10" LIFTING LOOPS
 DOUBLE FILLER CORD (SIFT PROOF SEAMS)
 DOCUMENT POUCH 9"X13"
 SWL 3000 LBS., S.F. 5:1
 100% VIRGIN POLYPROPYLENE